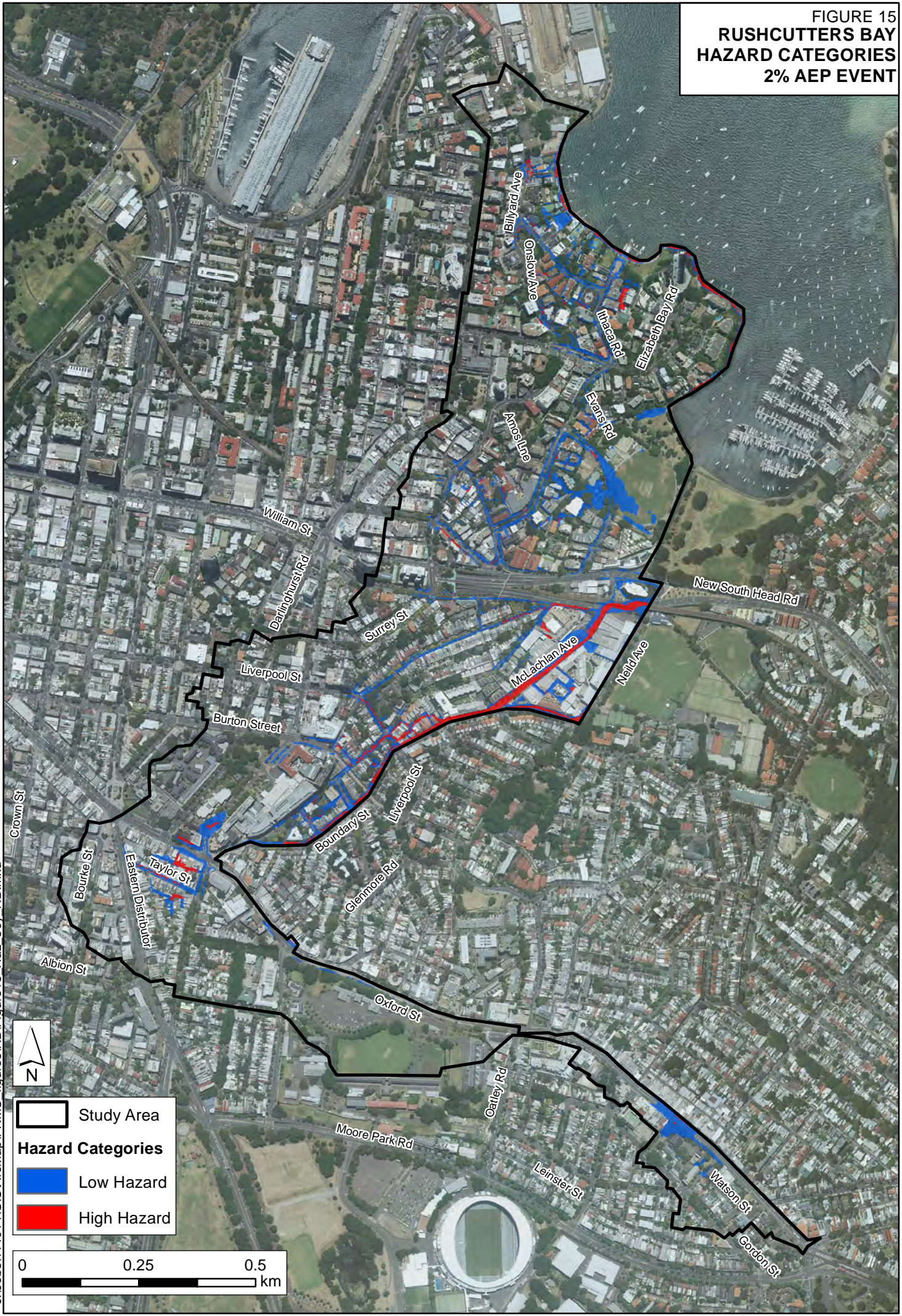


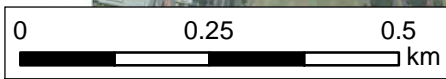
FIGURE 15
RUSHCUTTERS BAY
HAZARD CATEGORIES
2% AEP EVENT



Study Area

Hazard Categories

- Low Hazard
- High Hazard



J:\Jobs\114014\GIS\ArcMap\FRMS_figures\RB\Figure15_Haz_50y_RB.mxd

FIGURE 16
RUSHCUTTERS BAY
HAZARD CATEGORIES
1% AEP EVENT

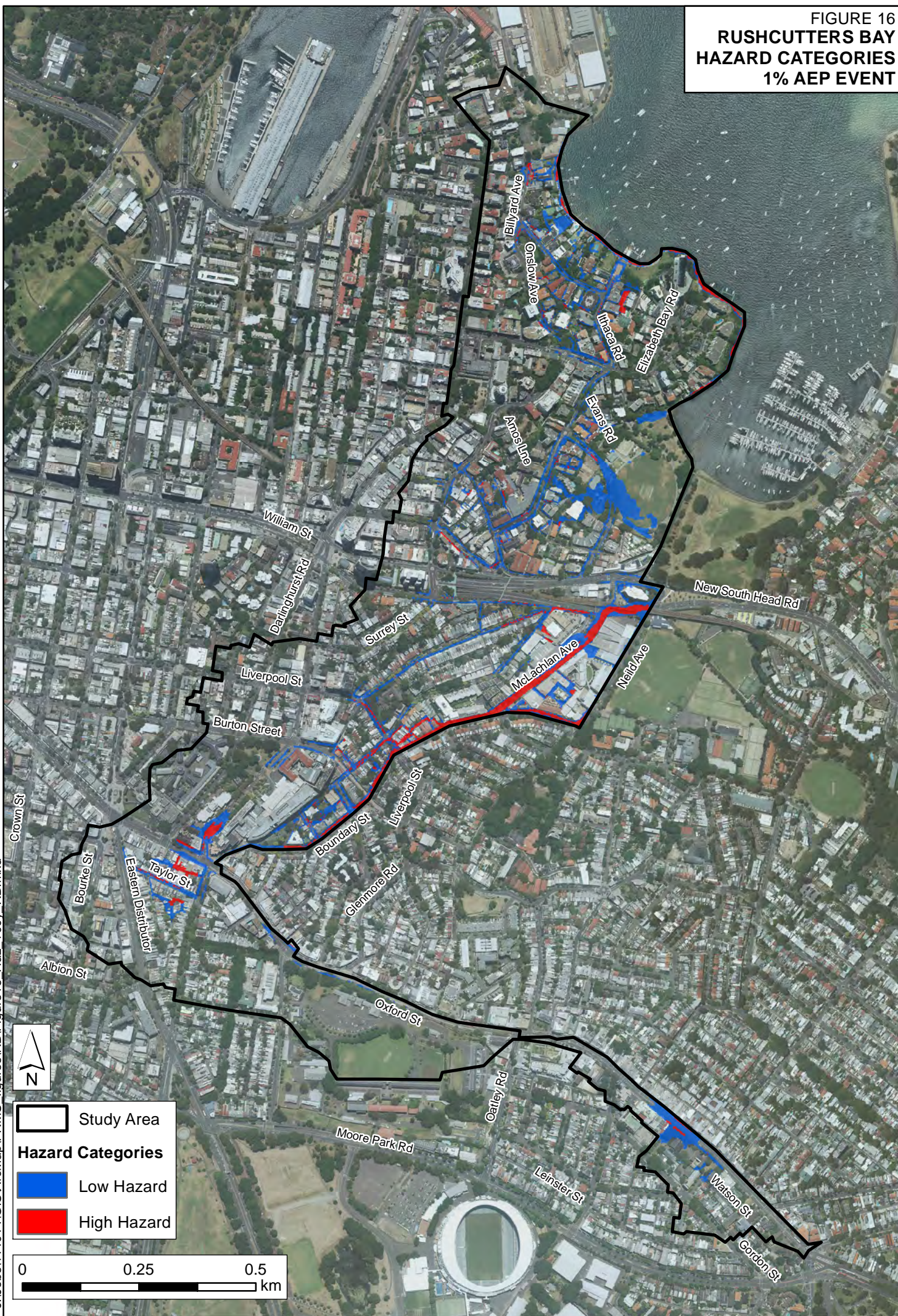
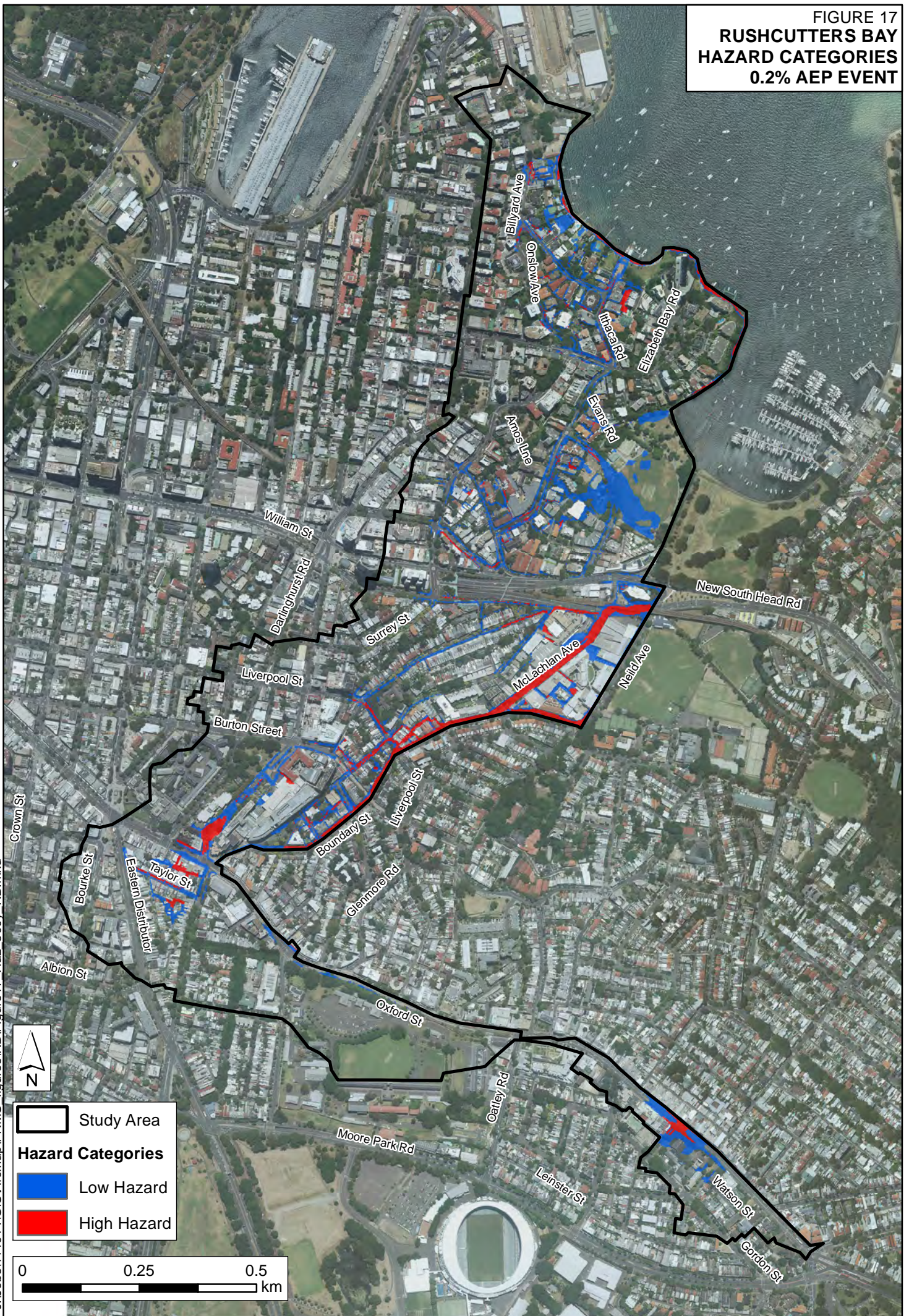


FIGURE 17
RUSHCUTTERS BAY
HAZARD CATEGORIES
0.2% AEP EVENT



J:\Jobs\114014\GIS\ArcMap\FRMS figures\RB\Figure17_Haz_500y_RB.mxd



Study Area

Hazard Categories

- Low Hazard
- High Hazard

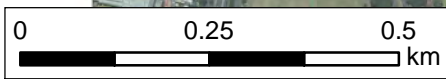
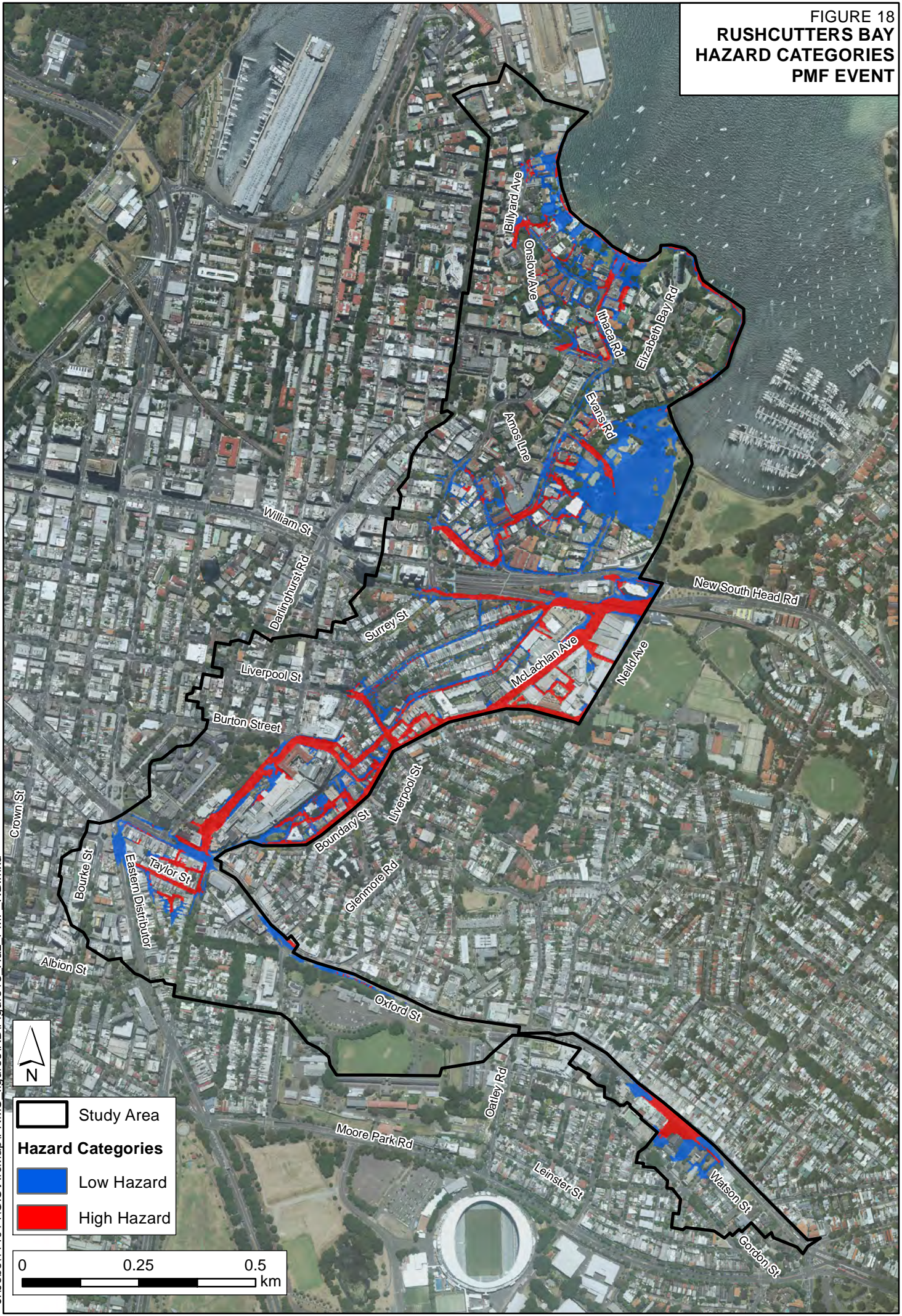


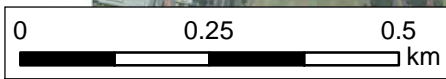
FIGURE 18
RUSHCUTTERS BAY
HAZARD CATEGORIES
PMF EVENT



Study Area

Hazard Categories

- Low Hazard
- High Hazard



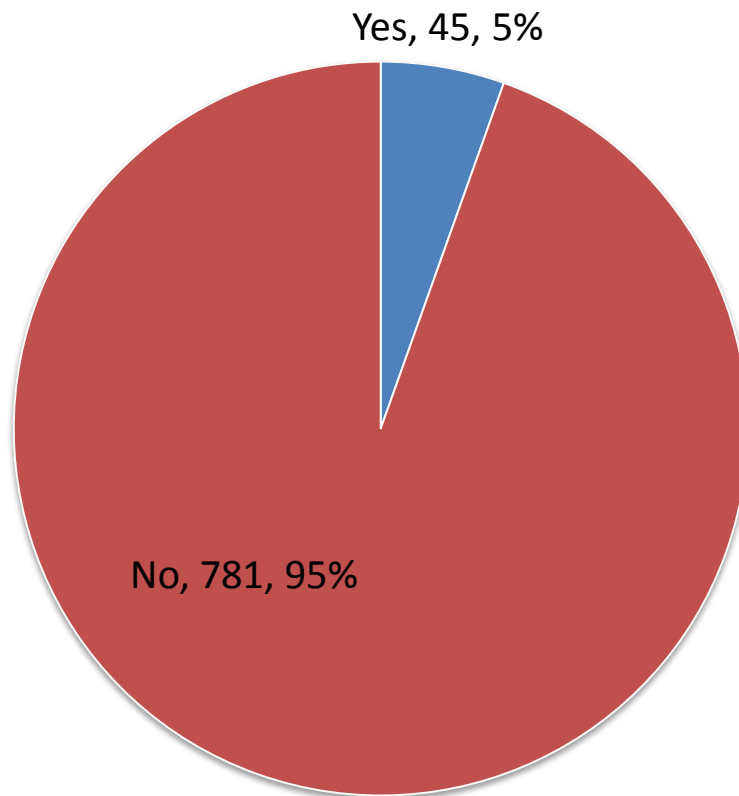
J:\Jobs\114014\GIS\ArcMap\FRMS_figures\RB\Figure18_Haz_PMF_RB.mxd

RUSHCUTTERS BAY DURATION OF INUNDATION 1% AEP EVENT

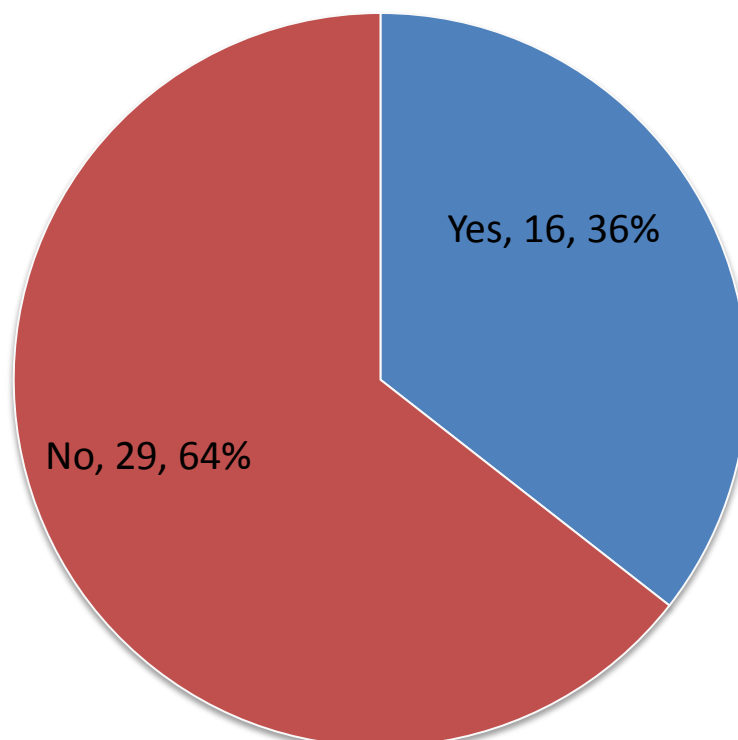
Note: Durations shown on this figure are for a 1% AEP design event duration of 1 hour. Duration of inundation will vary with other event durations.



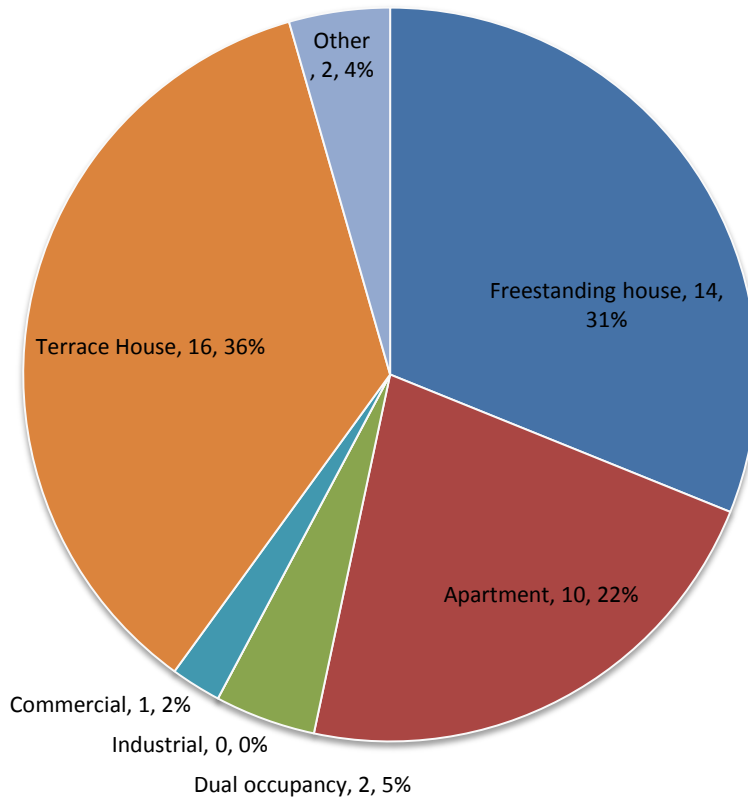
A: Number of Respondents



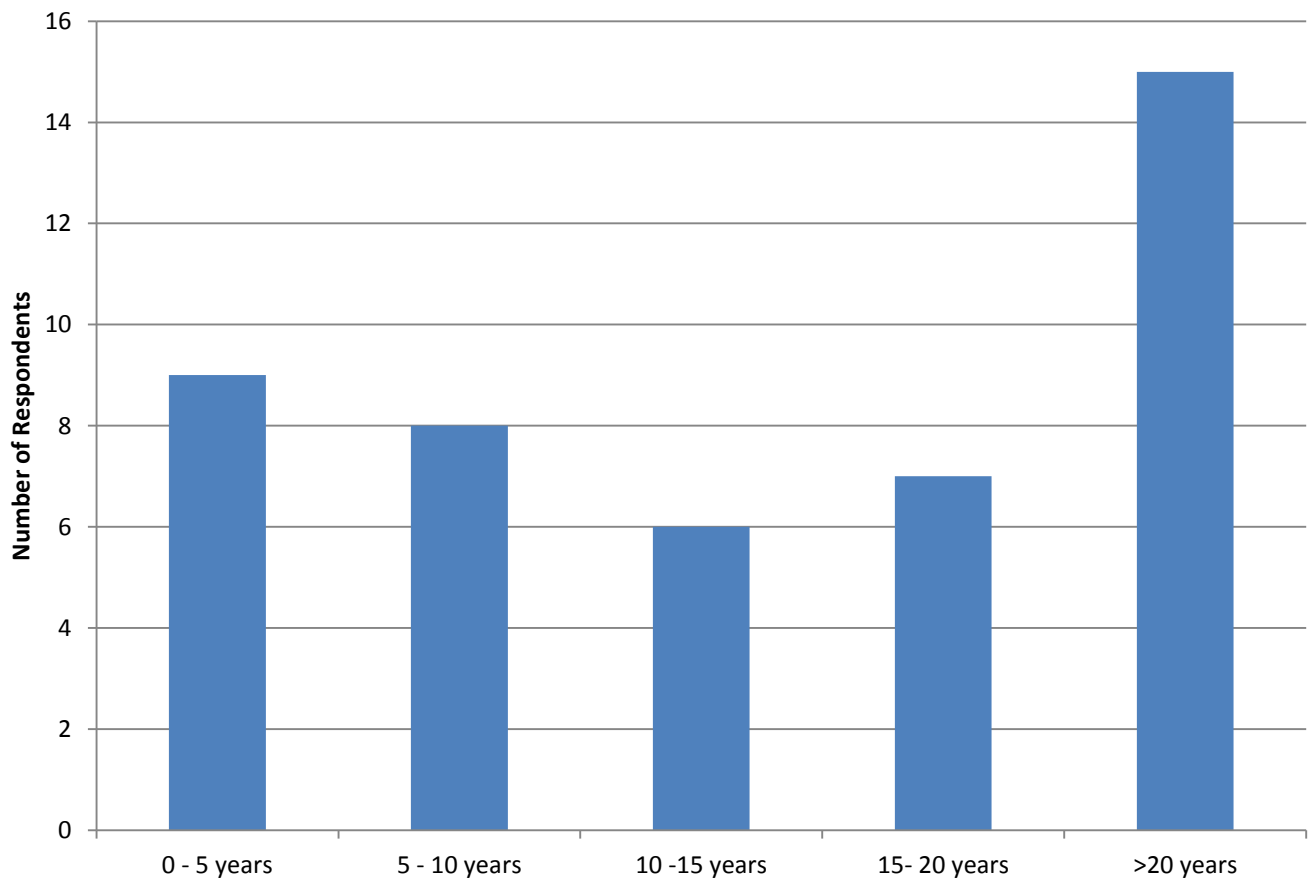
B: Experienced Flooding



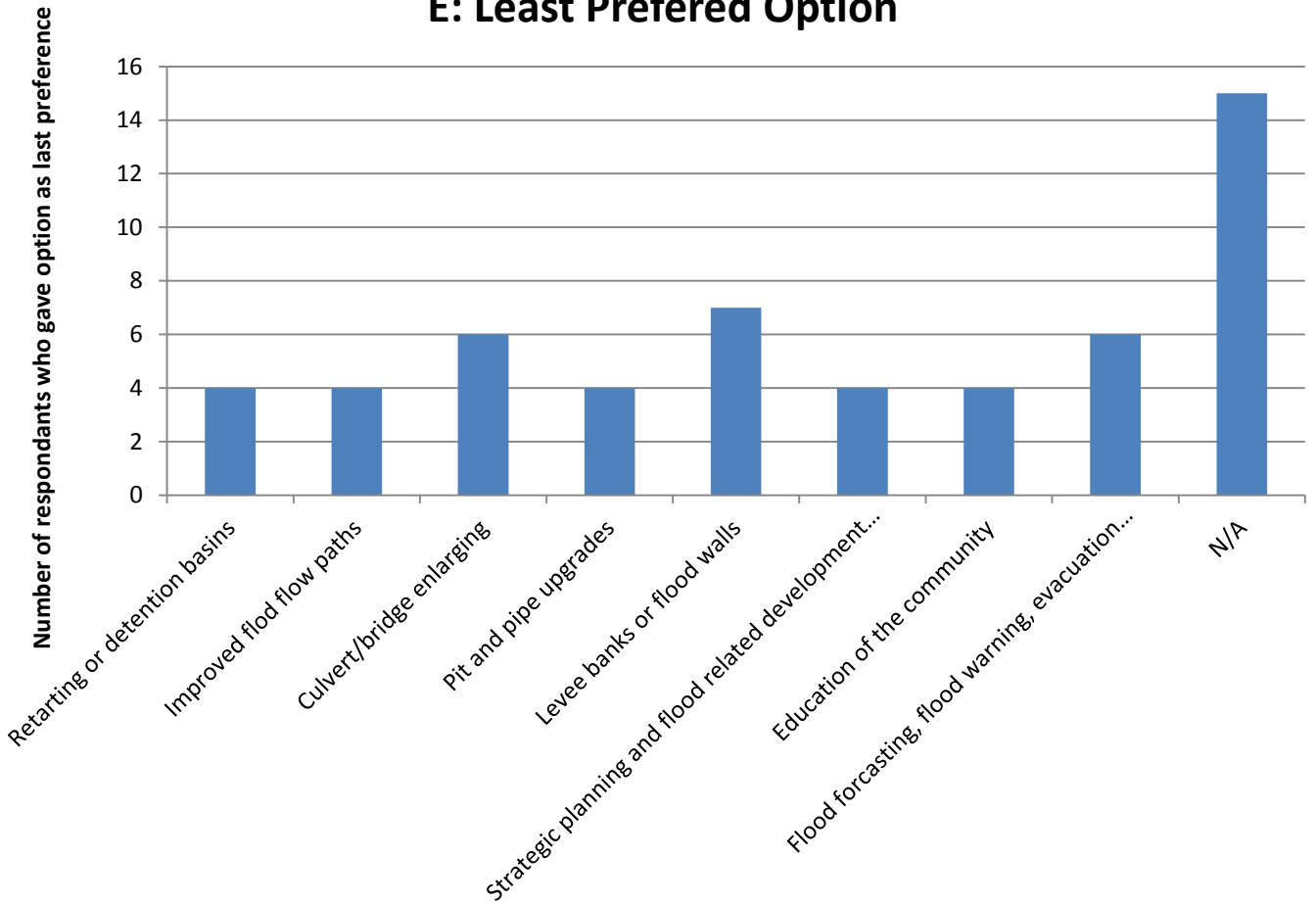
C: Property Type



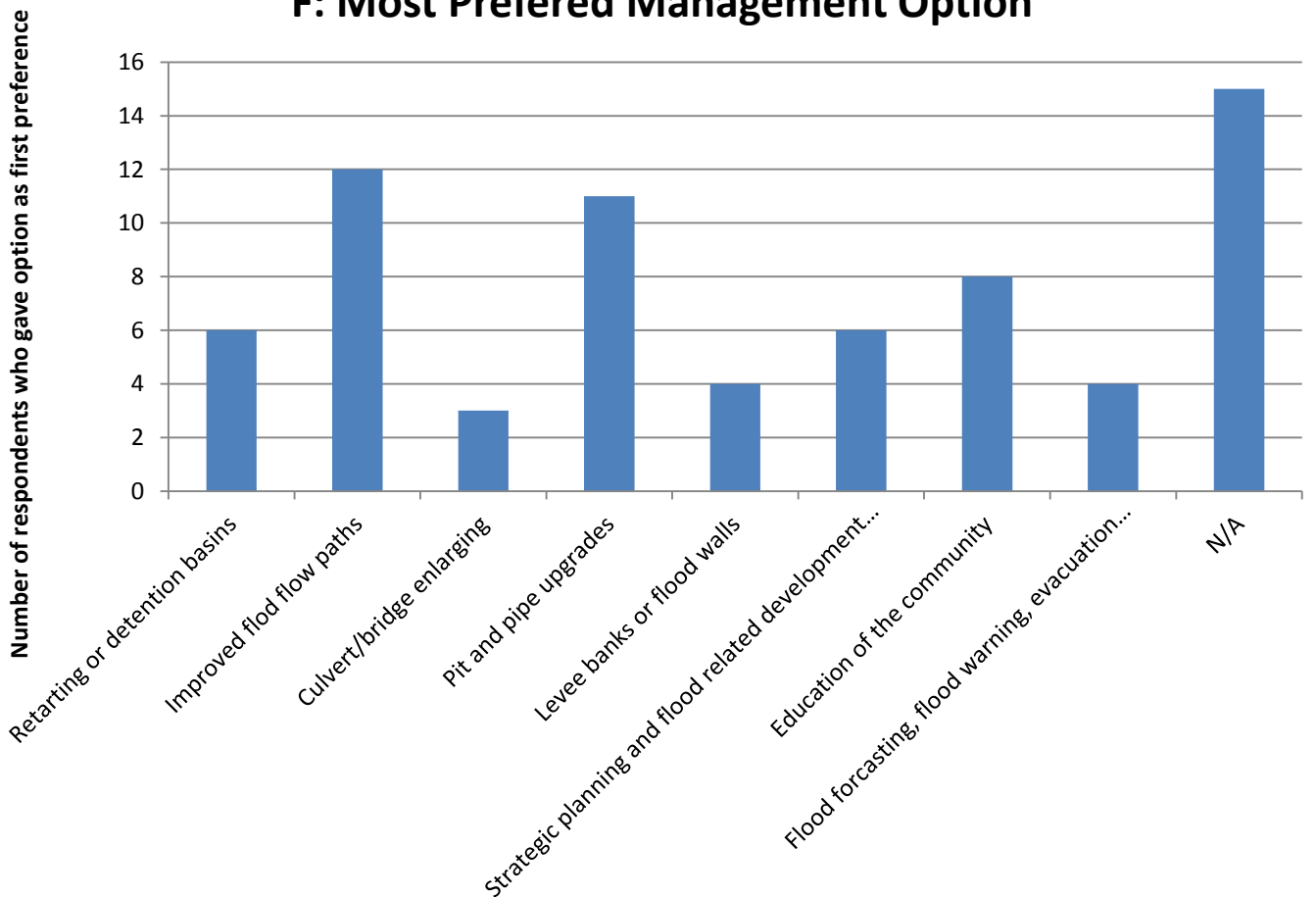
D: Period of Living/Working/Owning Property



E: Least Preferred Option



F: Most Preferred Management Option



G: Location of Flooding Experienced

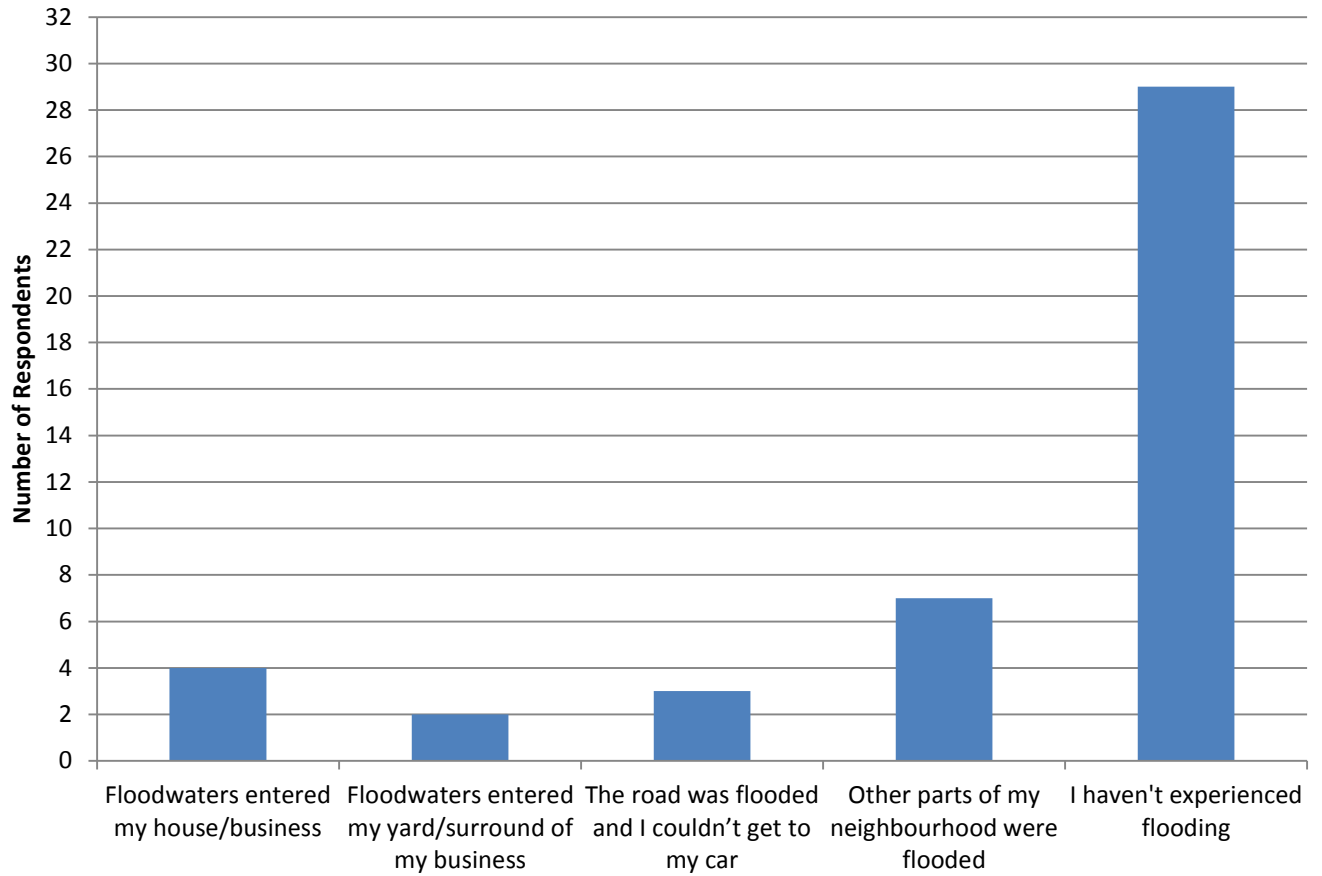


FIGURE 21
RUSHCUTTERS BAY
OVER FLOOR FLOOD LIABILITY

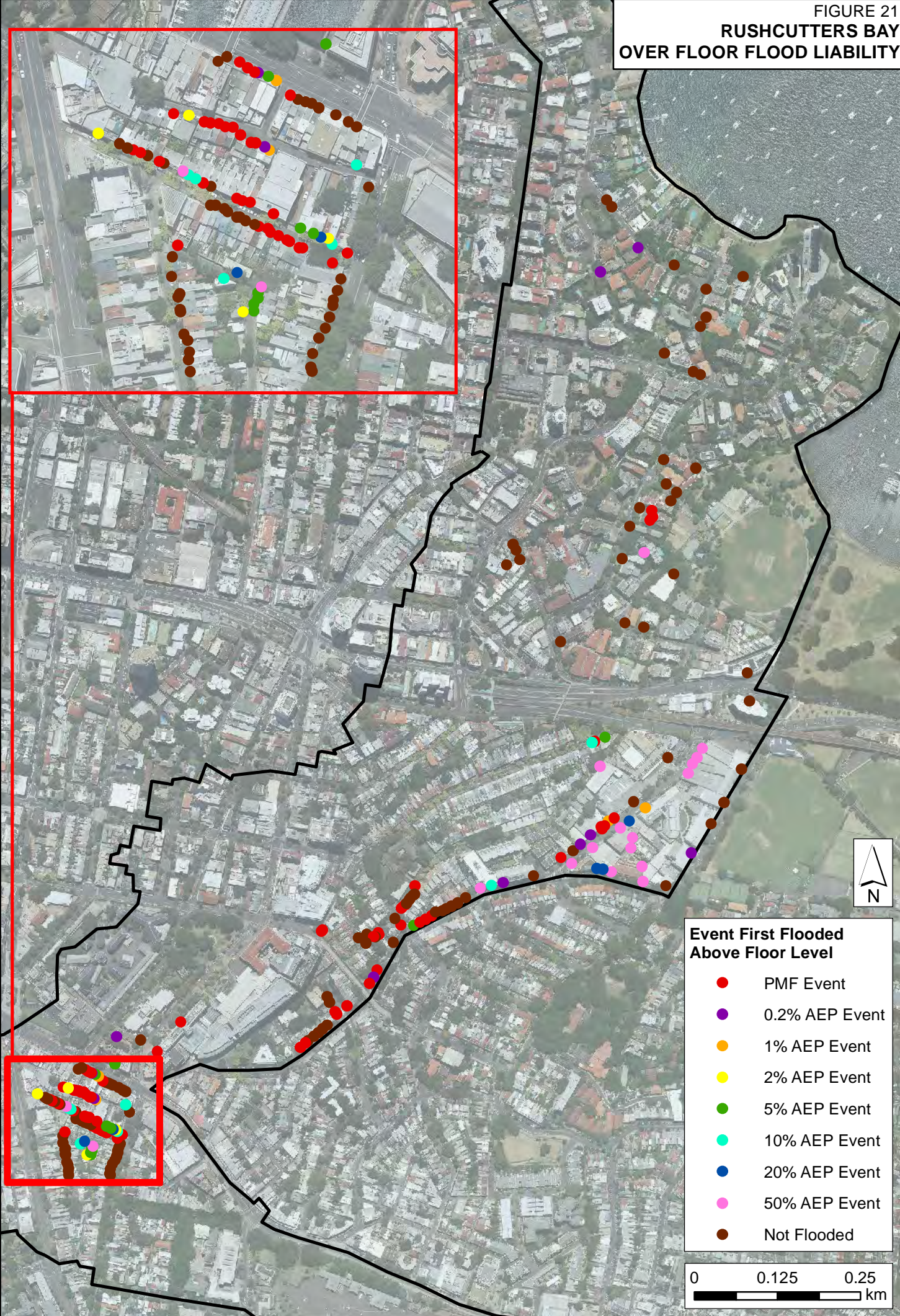
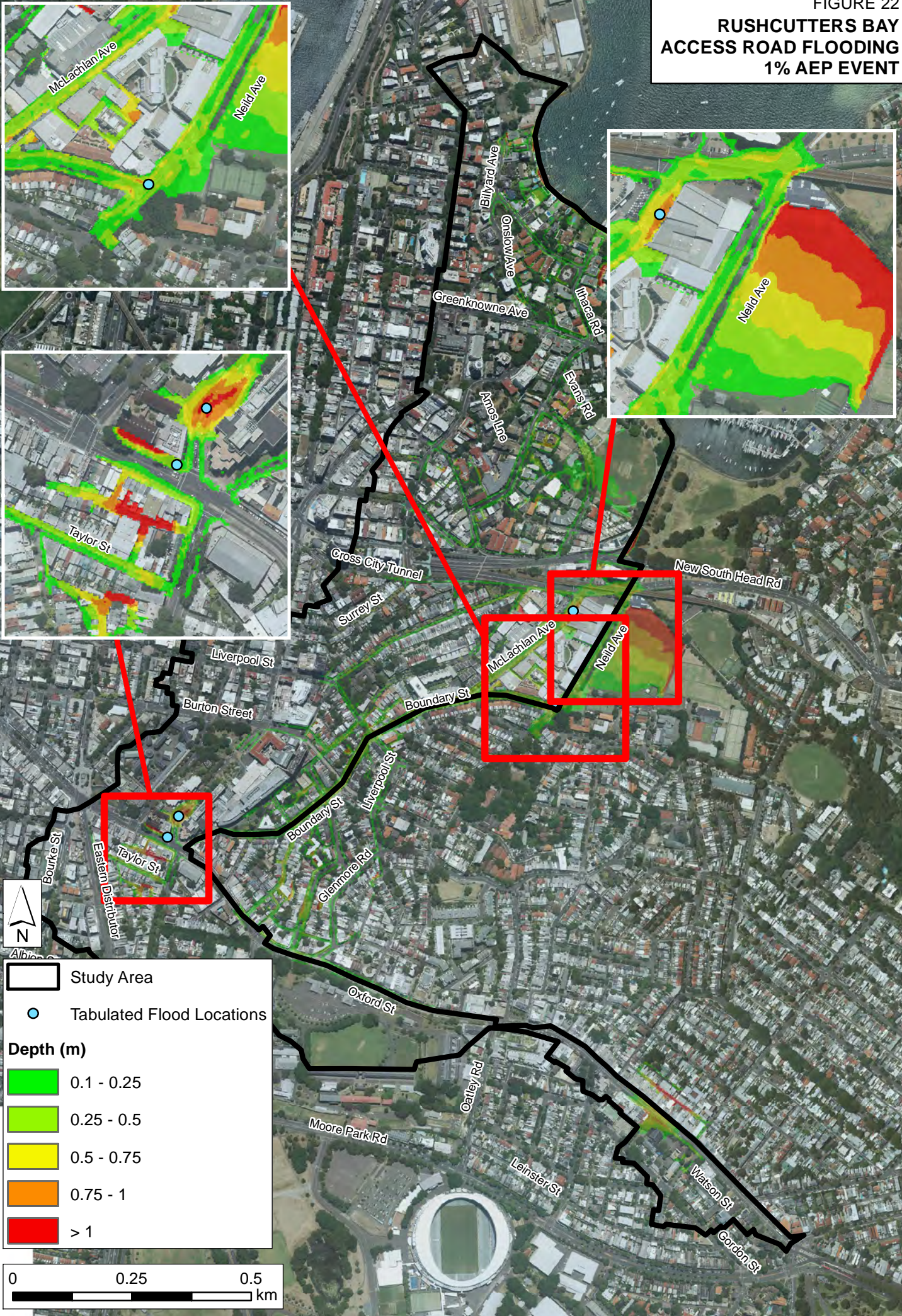


FIGURE 22
**RUSHCUTTERS BAY
 ACCESS ROAD FLOODING
 1% AEP EVENT**



J:\Jobs\114014\GIS\ArcMap\FRMS_figures\RB\Figure22_Access_Road_Flooding_RB.mxd

Study Area
● Tabulated Flood Locations
Depth (m)
 0.1 - 0.25
 0.25 - 0.5
 0.5 - 0.75
 0.75 - 1
 > 1

0 0.25 0.5
 km

FIGURE 23
**RUSHCUTTERS BAY
 FLOOD RISK MITIGATION
 MANAGEMENT OPTIONS**

FM-RB05: Drainage Upgrade
 - Upgrade capacity of drainage pipes on Victoria Street

FM-RB02: Drainage Upgrade
 - Upgrade capacity of trunk drainage along Boundary Street and Neil Avenue, outlet into Weigall Sportsground

FM-RB01: Drainage Upgrade
 - Upgrade capacity of trunk drainage along Boundary Street, Neild Avenue and McLachlan Avenue

FM-RB04: Drainage Upgrade
 - Upgrade capacity of trunk drainage from Taylor Street to Neild Avenue, outlet into Weigall Sportsground

FM-RB03: Drainage Upgrade
 - Upgrade capacity of drainage pipes on Taylor Street



Study Area
 Upgraded Pipes

0 0.25 0.5
 km

J:\Jobs\114014\GIS\ArcMap\FRMS_figures\RB\Figure23_MitigationOptions.mxd

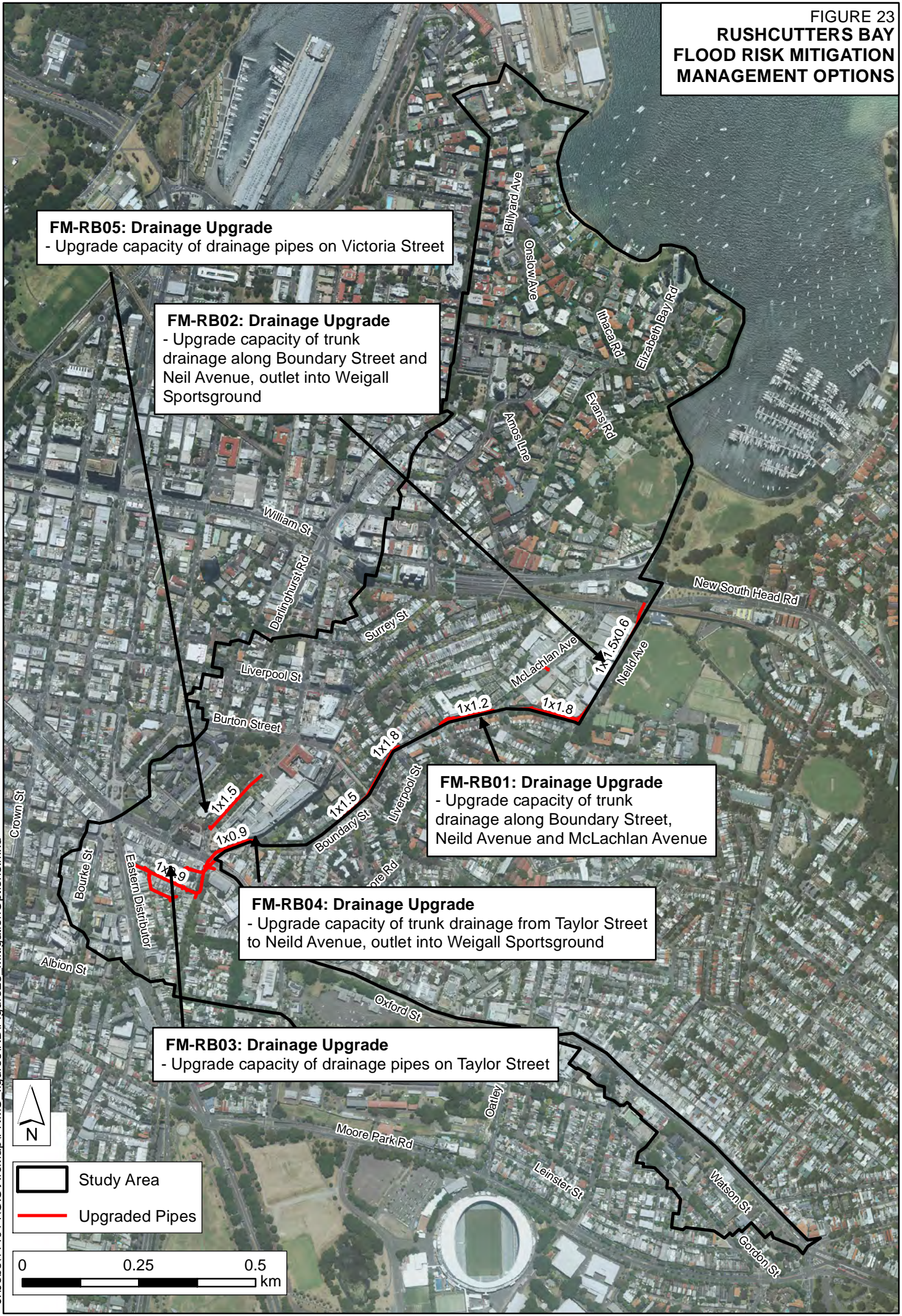


FIGURE 24
BOUNDARY STREET HOTSPOT
1% AEP EVENT

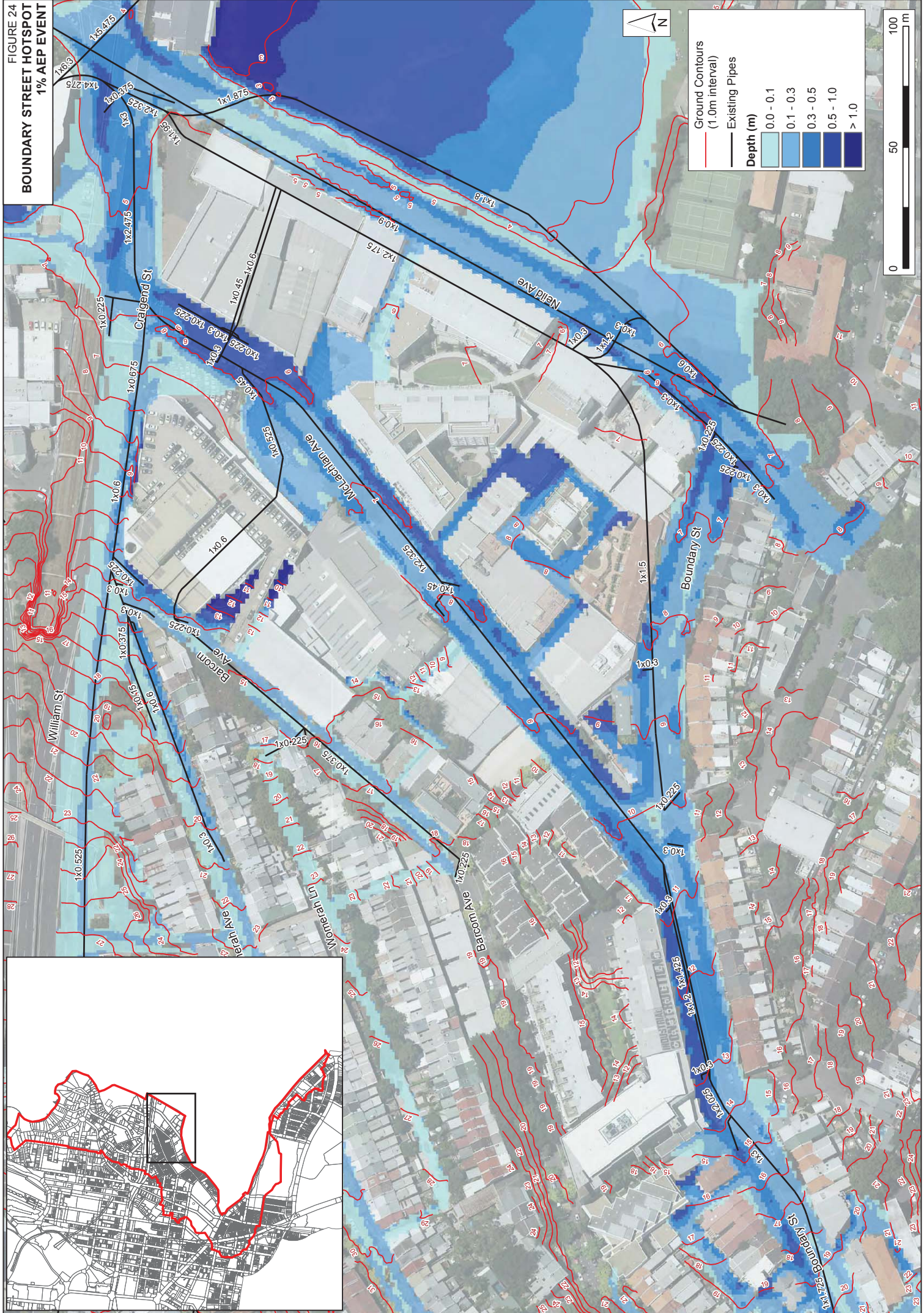


FIGURE 25
 OPTION FM - RB01
 10% AEP EVENT FLOOD IMPACT



Event First Flooded Above Floor Level

- PMF Event
- 0.2% AEP Event
- 1% AEP Event
- 2% AEP Event
- 5% AEP Event
- 10% AEP Event
- 20% AEP Event
- 50% AEP Event
- Not Flooded
- No Longer Flooded Above Floor Level in 10% AEP
- Upgraded Pipes

Impact (m)

- -0.42 - -0.3
- -0.3 - -0.2
- -0.2 - -0.1
- -0.1 - -0.05
- -0.05 - -0.01
- Minimal Impact
- 0.01 - 0.05
- 0.05 - 0.1
- 0.1 - 0.2
- 0.2 - 0.36
- No Longer Flooded
- Newly Flooded

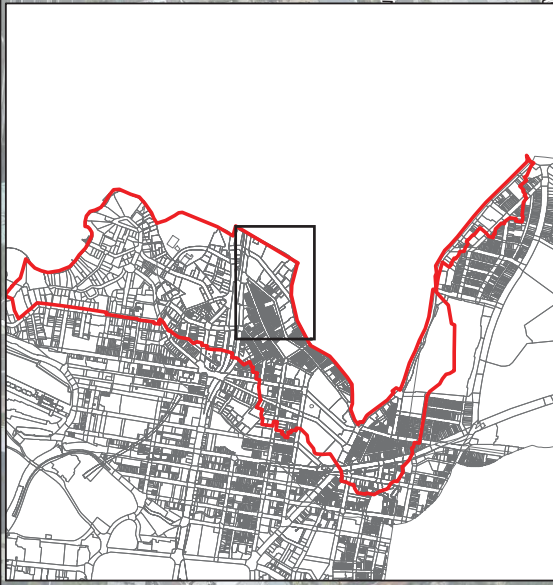


FIGURE 26
OPTION FM - RB01
10% AEP EVENT HAZARD IMPACT



FIGURE 27
OPTION FM - RB02
10% AEP EVENT FLOOD IMPACT



Event First Flooded Above Floor Level	
Red	PMF Event
Purple	0.2% AEP Event
Orange	1% AEP Event
Yellow	2% AEP Event
Light Green	5% AEP Event
Teal	10% AEP Event
Blue	20% AEP Event
Pink	50% AEP Event
Brown	Not Flooded
Light Blue	No Longer Flooded Above Floor Level in 10% AEO

Impact (m)	
Dark Red	-0.42 - -0.3
Red	-0.3 - -0.2
Orange	-0.2 - -0.1
Yellow	-0.1 - -0.05
Light Green	-0.05 - -0.01
White	Minimal Impact
Light Blue	0.01 - 0.05
Blue	0.05 - 0.1
Dark Blue	0.1 - 0.2
Very Dark Blue	0.2 - 0.36
Black	No Longer Flooded
Green	Newly Flooded

— Upgraded Pipes

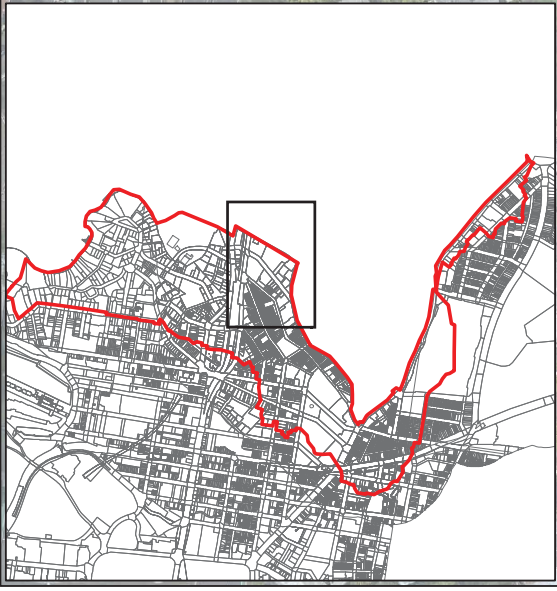
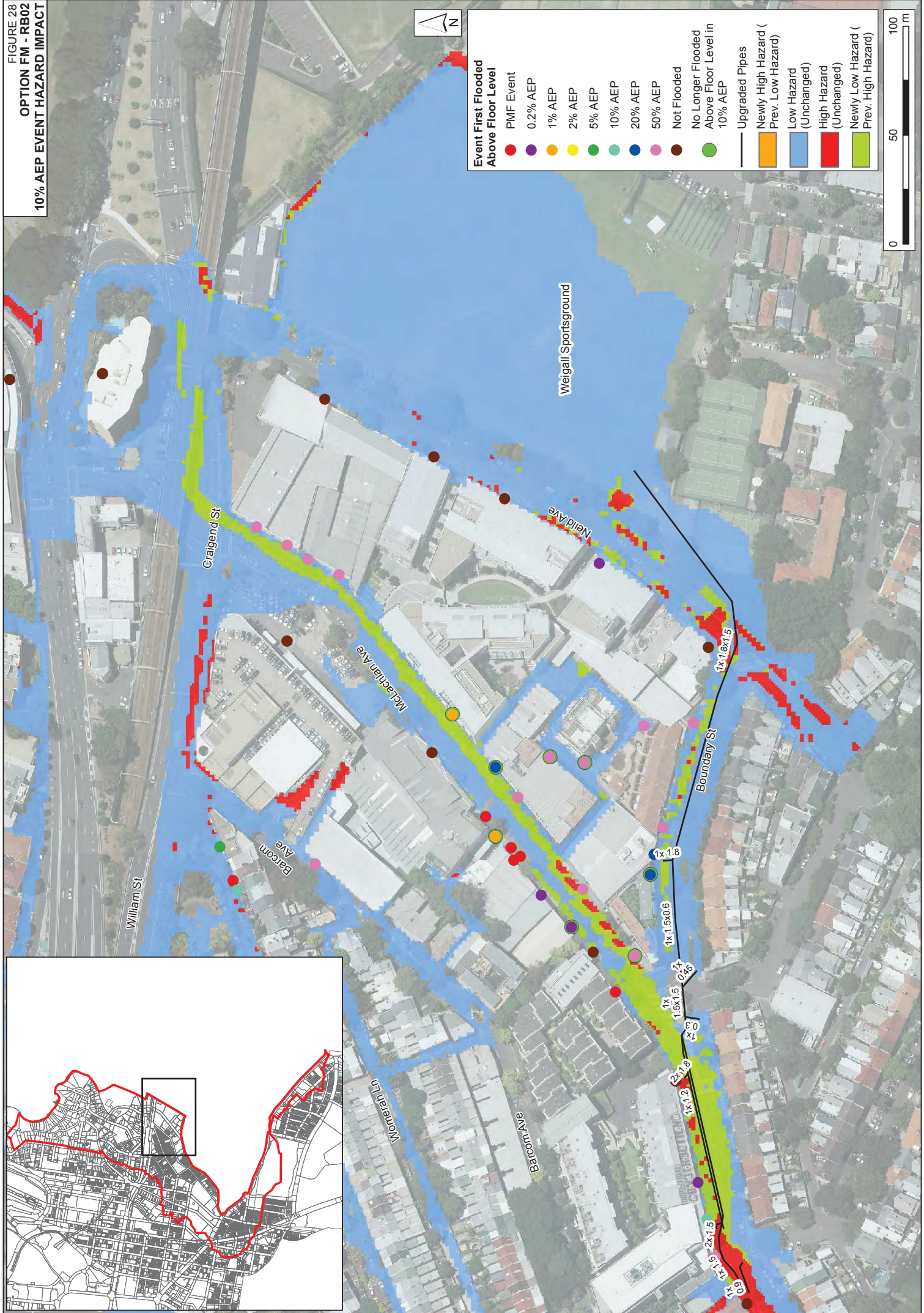


FIGURE 28
 OPTION FM - RB02
 10% AEP EVENT HAZARD IMPACT



- Event First Flooded Above Floor Level**
- PMF Event
 - 0.2% AEP
 - 1% AEP
 - 2% AEP
 - 5% AEP
 - 10% AEP
 - 20% AEP
 - 50% AEP
 - Not Flooded
 - No Longer Flooded Above Floor Level in 10% AEP
- Upgraded Pipes**
- Newly High Hazard (Prev. Low Hazard)
 - Low Hazard (Unchanged)
 - High Hazard (Unchanged)
 - Newly Low Hazard (Prev. High Hazard)

FIGURE 29
TAYLOR STREET HOTSPOT
1% AEP EVENT

